

# How SRE Stacks Up

Increasingly complex biz tech ecosystems. Constant change. Endless firefighting. The push to get infrastructure, applications and services to do more.

It's an ongoing battle for today's IT leaders — and the secret weapon may be site reliability engineering (SRE). That's why the **DevOps Institute** took a deep dive into the adoption, deployment and automation of SRE.

They surveyed 460 SRE leaders and practitioners from enterprise-level and midmarket companies and here is what they found:

## SRE IS HERE TO STAY.

Insights from the 2022 DevOps Institute Global SRE Pulse Survey

### Site reliability engineering is a critical function.

Within IT operations, development and other IT disciplines, SRE is relied on to address complex tech stacks and support evolving business ecosystems.



of enterprises have adopted SRE



leverage SRE within specific teams, products or services



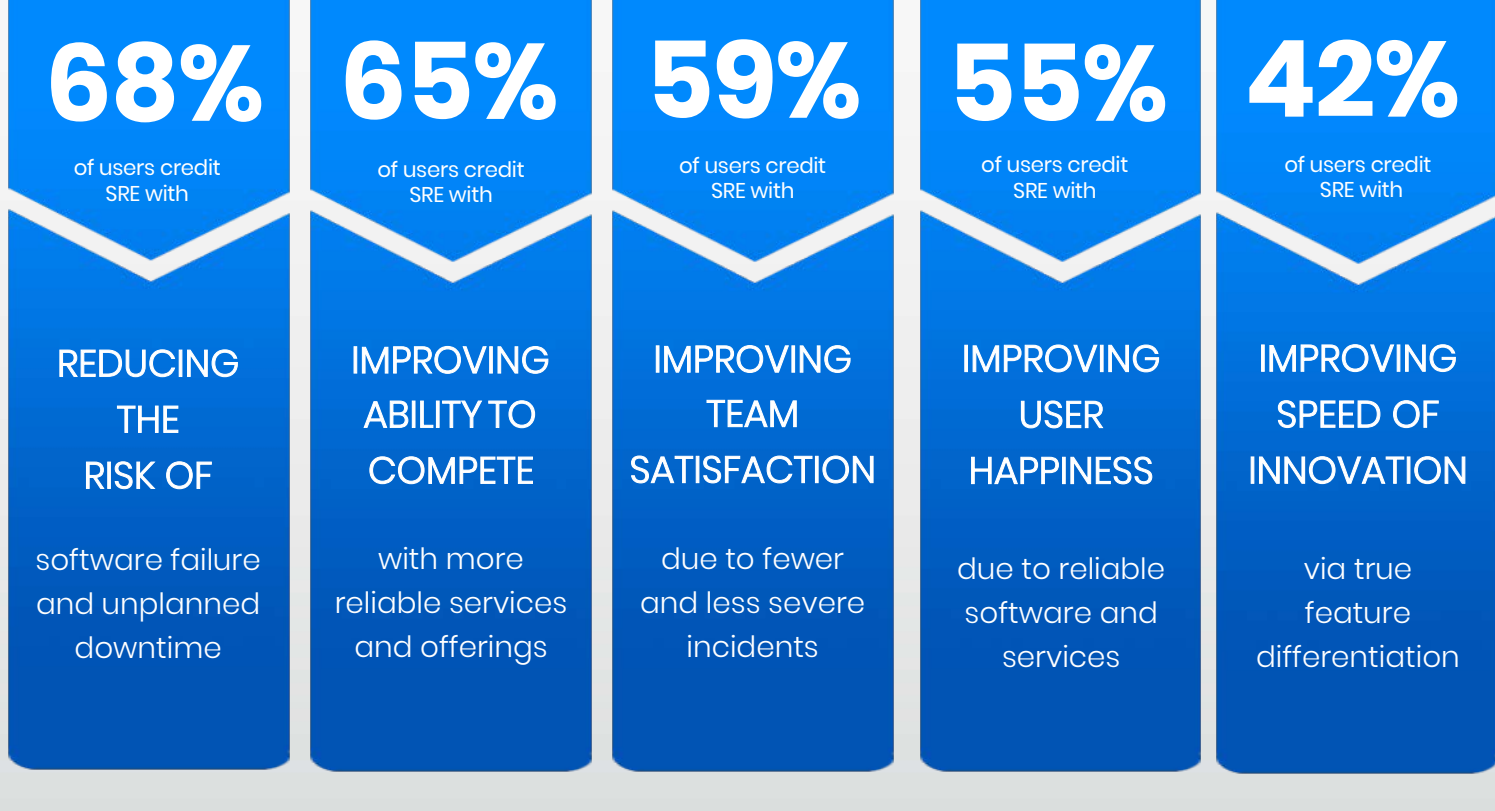
are implementing SRE across the entire enterprise



### SRE is crucial for digital transformation.

SRE is used to both **run the business** (system of record) and **serve customers** (system of engagement).

It's a model of collaboration, and — when done right — it works.



### Automation is in high demand.

SRE allows enterprises of all sizes to save money and utilize employees more efficiently by automating labor-intensive processes.

### But many face challenges assembling an SRE team.

- They're looking for a **Unique Skillset**

  - SRE pros embody a mix of IT operations mastery and a creative engineering mindset.
- It's a job that **Pays Well**

  - SRE pros can typically earn between \$103k to \$154k according to Robert Half.
- There's a lot of **Job Satisfaction**

  - SRE teams are well respected. They're energized and aligned with business needs.
- So why are they so **Hard to Find?**

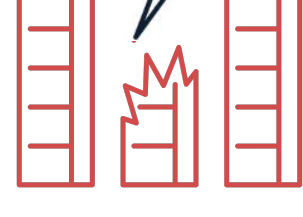
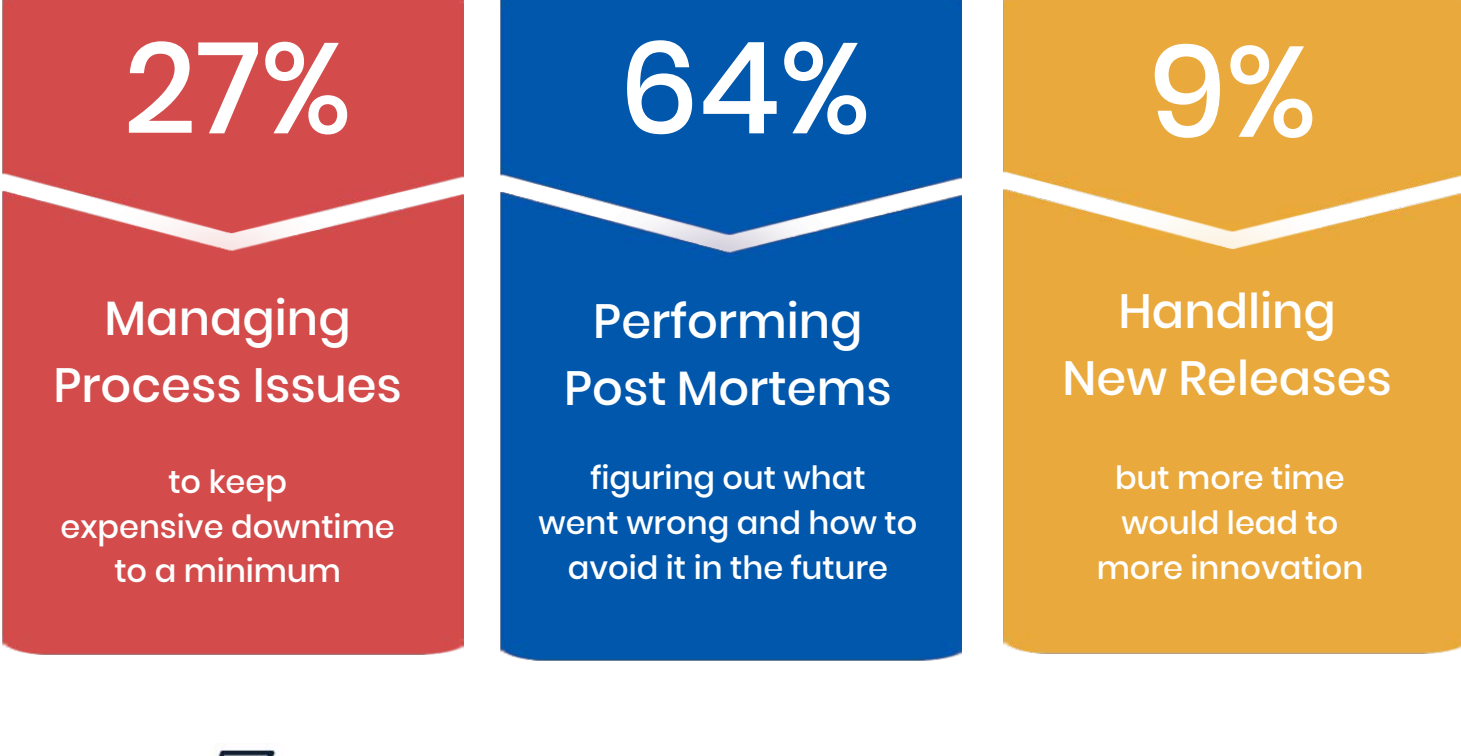
  - 85% of enterprise companies cite a lack of staff with the necessary skills.

### Site unreliability has a hefty price tag!

The hourly cost of downtime at enterprise companies surveyed runs from \$1,000,000 to over \$5,000,000.



### Here's how SRE pros spend their time:



With so little time left for innovation and new releases, automation tools — like monitoring, ITSM and **observability solutions** — are either **incredibly siloed** or not used at all.

### Site reliability relies on intelligent automation.

Automated change management can avoid:

- unnecessary outages
- human error
- disconnected teams



### Observability provides much-needed context.

- It **analyzes all data sources** to see impacts or issues
- It provides **contextual insight** into all aspects of a hybrid-IT environment
- It enables every enterprise to **share insights** across IT operations, development and business units



### SREs solve IT issues faster by using StackState to:

- Discover and observe eliminating silos
- Troubleshoot Kubernetes faster
- Identify issues, past and present
- Correlate all data over time
- Unify everything within one intuitive tool

[Download the report](#) to learn more about the state of SRE.

[Visit our playground](#) to see StackState in action.